



Medford Leas LIFE

VOL. XXXII, No. 5

MAY 2004

NEW ESTAUGH BOARD MEMBER

by Maggie Woodard

Implementing its new policies adopted at its recent weekend retreat, the Estaugh Board announced the appointment of **Ed Ferraro**, the third resident on the current board and the first non-Quaker, to serve as a Trustee on the Board. Ed and his wife Carol live at Lumberton Leas.

After receiving a B.B.A. (Bachelor of Business Administration) from Hofstra University, Ed held a broad range of executive, managerial, and financial positions during a 40-year career. From 1986 to 1996 he was Corporate Vice President and Chief Financial Officer of SEMCOR, a firm providing systems engineering and management consulting services to the Federal Government. This position entailed management responsibility for all corporate support activities including finance, accounting, operations control, human resources, and contracts. His expertise and experience will enable him to make significant contributions to Board deliberations as it puts into effect its recent decision to move away from management involvement to oversight and policy making.

Ed's experience in volunteer work will be of help in his new role on the Estaugh Board. From 1989 to 1999 he chaired the Planned Giving Committee of the Epworth United Methodist Church in Palmyra. From 1995 to 2003 he was active in the Greater New Jersey Annual Conference of the United Methodist Church, the organization that includes more than 600 churches in New Jersey, New York, and Pennsylvania.

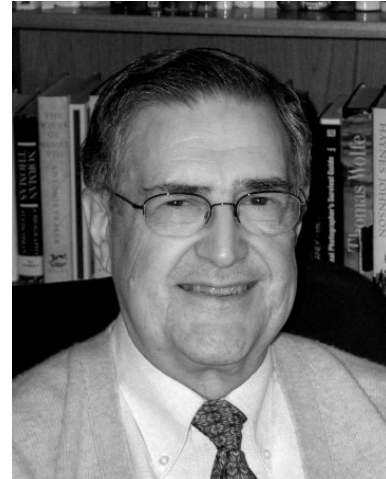


photo by Margery Rubin

In Medford Leas, Ed has been a member of the Lumberton Leas Resident Council and the Conceptual Design Committee, and presently is chairman of the MLRA Financial Review Committee. When asked what he hoped to accomplish, Ed replied that he, like the other Board Members, wants to represent current and future residents as best as he can.

Ed fully supports the Board's recent decision to focus on policy. It is very important for the Board, he says, to set very clear goals and objectives and then hold management accountable for meeting those goals.

Ed obviously enjoys helping people. He found the CDC a "great experience" in that it enabled him to get to know residents outside Lumberton Leas and also learn a lot. Medford Leas is fortunate that he accepted the challenge of being the first non-Quaker member of the Estaugh Board. He is sure to serve us well in his new role!

LEILA KRSTEK: PROFESSIONAL FRIEND

by Grace Spicer Stewart

Leila Maguire Krstek, Social Worker/Counselor, sparkles! Empathetic, upbeat, realistic, Leila has a trained listening ear. Subtle Irish humor personified, one Irish proverb on her office door reads: "May your home always be too small to hold all your friends."



photo by Margery Rubin

Leila grew up in Altoona, PA. She met her future husband, Robert Krstek, in high school, and they both attended Duquesne University. There she studied nursing for two years, and he finished his degree. After their marriage they moved to Marlton.

Leila then went on to Rutgers-Camden for a B.S. in medical technology, followed by 15 years of work experience. Going back into academics, Leila earned an M.S. in geriatric counseling from Trenton State University and another graduate degree in family therapy.

Leila's professional duties at Medford Leas include social services on the skilled units, Woolman and Estaugh, a grief counseling group, the Mental Health Committee, and individual and group counseling. She says that the bereavement group provides an opportunity for people to feel they are not alone—a safe place to share their feelings. "The whole person is important, mental and physical, and that's why I'm here," she

declares. Leila feels that being happy in older age has to do with inner peace, being happy with who one is. She wants to be able to help people live their own lives the best they can. With a trained listening ear, she can show a different perspective. Confidentiality is implicit and one of the most important aspects of counseling, she feels.

Leila and her husband have two grown children, Eric, a teacher at Lenape High School, and Caroline, an attorney in the Attorney General's office in Trenton. Robert is the principal at Eastampton Middle School. Leila volunteers on weekends at a summer camp for children who have had death in their family.

Here are comments from residents who were recently counseled by Leila. **Sally Burrowes:** "Leila is a warmhearted professional and never condescends. She's willing to share anecdotal things about her family that make her seem real."

Betsy Hoskins: "Leila was wonderful when my husband died – so supportive, and I still get help from her." **Tina Mecray:** "I was trained as a medical social worker, and I feel Leila is very professional. She has been supportive of me and close friends."

Leila herself states, "I like what I do here, and the people I do it with. I care. Every day is a gift." And so it is.

NEW MLRA BOARD

by Colette Bartholomew

At its meeting on April 19, the Medford Leas Residents Association elected the slate of six new members proposed by the Nominating Committee. They will serve for two years, together with the five members completing their second term. The new members are:

Jack Akerboom (Lumberton Leas), currently a member of the Lumberton Leas Council and cochair of tennis and bridge groups. He was Vice

President of Research and Development at Best Foods. He has published seven volumes of family history.

Doris Allebach (Courts), chair of the Building Committee, member of Interior Design Committee and the Master Plan Advisory Committee (MPAC). She was an interior designer in a New York architectural firm, specializing in institutional buildings such as libraries, nursing homes, and schools.

Bill Carson (Courts), a member of the Thrift Shop Committee and Fitness Committee. He has a Ph.D. in chemical engineering and worked for 40 years at Rohm and Haas Co., principally in research and development on plastics and related products.

Jean MacGregor Henderson (Bridlington), a member of the Mental Health Committee, Budget and Finance Committee, and MLRA Board member 1994-96. She co-founded the program between Medford Leas and The Extended Hand in Mt. Holly that provides food, clothing, and furniture to the homeless. She taught Latin in public school.

Rudy Salati (Courts), chair of the Wildflower Committee, member of the Woodshop Committee and Master Plan Advisory Committee (MPAC). He was an elementary school teacher and principal and Registrar and Professor of School Law at Glassboro State College.

Helen Vukasin (Lumberton Leas), chair of the Forum Committee, first president of Lumberton Leas Council. Her careers included economist at Federal Reserve Bank, modern dancer, consultant on environmentally sound community development in developing countries, and director of a community supported agriculture farm project.

The five board members who will be serving the second year of their term are: **Kitty Katzell, Grace Blackburn, Allyn Rickett, Eleanor Merrick, and Don Kocher.**

The Nominating Committee members are **Colette Bartholomew**, chair, **Berenice Finkelstone, Howard McKinney, Louise Stiles, and Fran Werrell.**



Lionel Pennsylvania RR – Steam Engine and Tender

THE ACTIVITIES ROOM PIANO

by Kitty Katzell

Sometime in April 2003, there suddenly appeared a lovely Steinway grand piano in the Activities Room. The old spinet had seen better days, and all the pianists and those who had to sing along were happy to have this fine new instrument. But what's the story? Where did it come from?

Back in 1974, **Matt Rodermund's** aunt died. In her will, she left him \$5000, which was a lot of money in those days. Matt, who is a pianist, and his wife, Edythe, lived on Long Island at that time. They went to Steinway's in Manhattan and Matt tried out several pianos before finally choosing this one.

When they moved to Medford Leas in 1982, they brought the piano with them to Apartment 56, where Matt continued to enjoy playing it. Edythe died in 1994, and Matt moved to Assisted Living Apt. 525 on April 1, 2003. He couldn't take his lovely piano with him to Assisted Living, so he donated it to Medford Leas.

To document the donation, Matt arranged for Steinway, at Jacobs Music in Philadelphia, to come out and appraise it. He has a letter from them showing their current appraisal at \$18,400. We are all most grateful to Matt for his very generous gift.

FINANCIAL REVIEW COMMITTEE

by Wil Britten

The Financial Review Committee is one of the oldest of the MLRA committees. For over twenty years, it has been the purpose of this committee to continually review the finances of Medford Leas with both the Management and the Estaugh Board and to help residents to understand the financial decisions which affect their lives. While the Committee can, and frequently does, offer suggestions on financial matters, it has no operational role in such financial decisions.

Members of the current committee are: **Ed Ferraro**, Chairman, **Grace Blackburn**, **Wil Britten**, **Ed House**, **Jack Mutschler**, **Chuck Woodard**, **Dave Wilder**, and **Walter Zwarg**.

Each year, when the annual monthly rate changes are announced, the Committee is responsible for reporting to residents its considered opinion on the acceptability of the rate changes. This opinion is then presented to residents at an open meeting. Other reports are made at open MLRA meetings. In 2003, several special meetings were held with the Estaugh Board and Management to discuss the proposed budget for the next fiscal year and to make suggestions for areas where operational efficiency might be improved.

In short, the Financial Review Committee strives diligently to fulfill its role as a reliable source of communication between the Estaugh Board, the management, and the residents. In recent years improving this communication has been a major focus of the Committee, and many believe that progress has been made. Interaction with the Estaugh Board and the management has improved, and a regular schedule of more frequent meetings has been established.

The Committee understands the continuing importance of its role in assuring that all residents have a clear understanding of and confidence in the financial decisions which so vitally affect the quality of our life here at Medford Leas.

SPRING CHAMBER MUSIC

Spring brought daffodils and other early bloomers, despite the cold and rainy weather. It also brought us two wonderful chamber music concerts by resident musical artists **Mary Cullen**, **Mary Fenimore**, **Nan Hanslowe**, and **Tamara Kosteljanetz**.

On March 31, Mary Fenimore and Tamara played a four-hand piano program whose highlight was a performance of Prokofieff's "Peter and the Wolf," played by Tamara and narrated by her cousin, Lilli Afan, who plans to come to Medford Leas in the future. Rounding out the program were pieces by Debussy, Fauré, Ravel, and Barber.

On April 3, soprano Nannette Hanslowe, accompanied by Mary Cullen at the piano, gave a recital of songs by Schumann, Wolf, R. Strauss, and Brahms. Although Nan sang in the original German, an enthusiastic audience of about 100 followed the poems that inspired the music in English translation provided in the program.

ANNUAL PLANT SALE

by Dottie Kriebel and Ellen Wiener

The Annual Spring Plant Sale will be held on Tuesday morning, May 4, in the Estaugh Mall from 8 until noon. Residents and staff are encouraged to postpone buying their spring plants until then so that the plants are less likely to suffer in the cold nights ahead.

The sale will be offering a nice selection of hanging baskets, geraniums, New Guinea impatiens, petunias, ageratum, and other varieties of flowering plants as well as herbs, tomatoes, and peppers. Prices will be below retail. Profits from the plant sale will help pay for flowers in the public rooms during the season when there are no flowers in the cutting gardens.

Once again, residents using wheeled vehicles and walkers may choose their plants the night before, Monday, May 3, between 6:30 and 7:30.

OUR REPRESENTATIVES

by Gordon Beckhart

Ed. Note: The MLRA Citizens Committee recommends that you cut and save this list to have it available when you wish to contact your elected officials during this election year or on any pending legislation important to you.

Federal Representatives

Postal mail is preferred; email is possible through website contact forms.

Senator Frank Lautenberg
324 Hart Senate Office Bldg.
Washington DC 20510
202-224-3224
www.lautenberg.senate.gov

Senator Jon Corzine
502 Hart Senate Office Bldg.
Washington DC 20510
202-224-4777
www.corzine.senate.gov

Congressman Jim Saxton
339 Cannon House Office Bldg.
Washington DC 20515
202-225-4765
www.house.gov/saxton

New Jersey State Representatives

All three representatives can be reached at the same address and phone number:
300 Midlantic Drive, Suite 103,
Mt. Laurel NJ 08054; 856-234-8080.

State Senator Martha Bark
SenBark@njleg.org

Assemblyman Francis Bodine
AsmBodine@njleg.org

Assemblyman Larry Chatzidakis
AsmChatzidakis@njleg.org

MEET OUR NONAGENARIANS

by Maggie Woodard

Margaret Lawson looks forward to each day. Energetic, friendly, thoughtful, she is a delight to talk to and be with. Because she's fit and active, she seems much younger than her 91 years. Since she came to Medford Leas in 1990, she has served on fourteen MLRA committees and is still a member of nine, including the Auditorium and Mail Distribution Committees. She also takes a turn as hostess at the Colonial Room Hospitality Table, and gives guided tours of Medford Leas to prospective residents. As co-chair of the Gift Shop, she purchases cookies, stamps, and paper products for the shop, and every Monday morning helps to sort newly donated clothing in the Thrift Shop. Margaret somehow manages time for the 8:30 exercise session on Wednesday and Friday, rides a bicycle in the Fitness Center on Tuesday, and plays bridge on Tuesday and Saturday nights. As she says, "I don't give up!"



photo by Margery Rubin

Traveling has always been her big interest and has afforded her much pleasure over the years. Until 1995 she traveled every winter to New Zealand to visit relatives. She still corresponds regularly with them. She also has been to Europe and Asia eight times over the years. Last October she took a European river cruise; she recommends these small-boat trips. This fall, she is taking an Omni trip to Norfolk, VA to attend the Tattoo and Azalea Festivals. The Tattoo interests her especially because it is Scottish; she was born in Scotland and came to the United States at age eleven. We're glad she came here!



Lionel Logo with Twin Steam Engines

WHAT IS ORANJ?

by Evert "Bart" Bartholomew

ORANJ is the acronym for the Organization of Residents Associations of New Jersey. ORANJ is for the residents of CCRCs. There are now 26 of them in New Jersey, and the Medford Leas Residents Association is an active member. Three of our residents are on the executive committee: **Bill Stoll** is editor of the quarterly newsletter, **Kitty Katzell** is chair of the Communications Committee and **Evert Bartholomew** is immediate past president. **Bob Anderson** was president for five years. The current president is Charles Germany of Winchester Gardens in Maplewood, NJ.

One of the chief values of ORANJ is the sharing of ideas and information at its two biannual general meetings and periodic executive committee meetings. Questionnaires have been circulated about dining and food practices, administration and financing of recreational activities, management of swimming pools, and policies on electric carts. The results are shared with all residents associations and discussed at general meetings.

ORANJ also seeks to monitor and influence the laws and regulations that pertain to CCRCs. There is an active legislative committee that briefs members on important issues and has begun to do some lobbying. A NJ state senator is to address the spring meeting at Meadow Lakes on April 21.

The Medford Leas residents who have been active in ORANJ have found it a rewarding experience. Through occasional reports and with articles such as this one, they hope that more residents will become aware of what ORANJ is and what it can do for them.

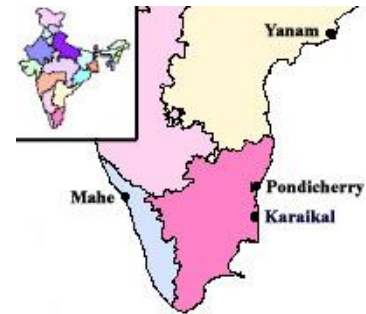


Lionel Union Pacific RR Diesel Locomotive

LIFE-CHANGING VISIT TO INDIA

by Kent Larrabee

I celebrated my 86th year in February and March in a part of Southeast India known as Pondicherry. It is an Indian city of about one million people along the coast of the Bay of Bengal.



One section of the city is devoted to an Ashram where several thousand people live simply in support of each other. About half of them, who have dark skin, were born and raised near the equator. Another half moved into the area from other countries. There is simply a lot of love and support within the Ashram between dark-skinned and white people. The numbers are deliberately kept about the same with great acceptance.

Those within the Ashram have simple housing, frequent gatherings in support of their beliefs, and daily food preparations for thousands. The low cost of living is remarkable. They pay 20 rupees a day for three substantial meals. The dollar equivalent would be less than 50 cents. Daily housing costs an average of about 60 rupees, or about 70 cents. This shows how little it takes to live in India and be well taken care of.

Since the Ashram faces the sea, thousands of people hike the length of the cement "boardwalk" every day. A magnificent monument to the Mahatma Gandhi looks out over the city. Classes and evening events are frequent. Silent meditation draws thousands who come to honor the Mother and Sri Aurobindo. These two founders were great spiritual leaders who established the Ashram and were powerful in helping create the independence of India in the 1940's.

There is great friendliness among the Indian people. At the same time, outside of the Ashram, there are larger numbers of families who are poverty-stricken and live and sleep on the streets. They literally stay alive on rupees given by those passing by.

The round trip by airplane cost me \$1,255. The cost of my two-month adventure was less than the cost of living at home. This was the fifth time I have gone to India and benefited, Being close to 90 years, this will be my last visit. Going by myself was wonderful each time. The memory is rich indeed.



Lionel NY Central RR Streamlined Steam Engine and Tender

CDC REPORT

by Kitty Katzell

Although not essentially a part of a CDC report, it must be noted here that the members of the Conceptual Design Committee (CDC) are proud and delighted that one of our members, **Ed Ferraro**, is the first non-Quaker to be invited to serve on the Estaugh Board. Ed has been of inestimable value to the CDC and we know he will be equally valuable as a member of the Estaugh Board.

Since the three meetings at which CDC reported on the status of progress, there have been no regular meetings of the Committee as a whole. The Estaugh Board is continuing its review of the CDC recommendations, and the Design

Committee has been meeting to refine plans for the new residential units and the new Health Care Center. As previously reported, it is hoped that work will begin on the new residential units by the end of 2004, and that work will start on the Health Care Center by the middle of 2005. By extension, this means that the two courts to be displaced by the new Health Care Center will not be disturbed for at least another year.

Negotiations continue to go forward between Medford Leas and the Township to enable work to be started. Decisions are still to be made about the size, location, and number of the first group of new residential units, depending in part on details being worked out with the Township. And, as Jim Price of Aegis Property Group, the Project Manager, explained at one of the open meetings, there are many details to be worked out as things move along, so we can expect it to be a time-consuming process.

The April CDC Report in *Medford Leas Life* said that the re-contracting of all Medford Leas residential units would be the revenue source to finance the long-term debt. Apparently this was misunderstood by some readers. What this means is that, any time an old or a new residential unit becomes vacant, it will be re-contracted to a new resident, as is true currently. Those entry fees from new residents in the re-contracted apartments will be the revenue source to finance the long-term debt incurred to finance the construction of the Health Care Center and the renovation of the Haddon and Woolman buildings into social model assisted living units.

IN MEMORIAM

Alice Ball	March 19
Sally Eynon	March 23
Herbert S. Hinman	April 6

*MLRA invites
you to a tea in the
Lounge and Atrium
on Tuesday,
May 18, 2004
2:30 to 4:00 p.m.*



WOODLAND GROUP CLEAN-UP

By John Caughey

Each year, the MLRA Woodland Group undertakes the project of making an early sweep of the Medford Leas campus to pick up the trash that the long winter has accumulated.

The Group met at 8:30 a.m. on March 23 in the Nature Center. Present were the regulars of the Group: **Ruth Blattenberger, John Caughey, Gordon Clift, Steve Denham, Dave Sleeper, Holger Stub, and Dave Wilder**, with **Paul Mecray** present in spirit. We were joined by **Jim Wolosin** and about 15 members of the Maintenance crew. Jim brought a huge map of the Campus which was used to plan our attack. The Woodlands Group decided to sweep the Meadow while a section of the Maintenance crew tackled the very difficult task of clearing the swale behind Bridlington.

As a result of all our efforts, the campus now has an extra pristine look as it begins to take on its mantle of spring green.

Many thanks to Jim Wolosin and his crew.

WILDFLOWERS WEBSITE

www.mlra.org/wildflowers/
by Maggie Heineman and Rudy Salati

A picture is worth a thousand words, and so the display on the Nature Bulletin Board near the Coffee Shop shows the Wildflowers website far better than any article in Medford Leas Life could. In addition to alphabetical indexes, there are pictorial indexes with thumbnail photos linking to the individual pages for each of the wildflowers at Medford Leas. The "Wildflowers Walks" page presents a record of what flowers were seen blooming during each of the Saturday morning walks – see monthly and weekly calendars for meeting times and places. In time, the website will include a trail map and a trail guide, and of course more and more photos from resident photographers.

*The Social Activities Committee
of Lumberton Leas
invites you to an*

Informal Garden Tour

*Stroll our paths and enjoy an afternoon
with friends and neighbors*

*Meet in the Great Room
for displays and refreshments
A posy for everyone*

Friday June 4

*(Rain date, Monday June 7)
2:00 to 5:00 p.m.*

*Bus available from Medford Campus
2:00 p.m. — return at 4:00 p.m.*

Show Off Your Best Summer Hat

AT HOME WITH ELEANOR ROOSEVELT

by Penny Fykse

In the early 1950's my husband, Lew, and I were living in Cleveland Heights, Ohio, with our three-year-old son and seven-year-old daughter. My husband was vice president of Standard Tool Company and program chairman of The University Club of Cleveland, Ohio.

A dinner and speech program by Eleanor Roosevelt was planned at the University Club. My husband was to pick up Mrs. Roosevelt at the airport and bring her to the dinner at the club. She was to arrive shortly after noon, and Lew asked if it were possible to bring her to our home to rest up before the dinner. Now I had never been an admirer of the Roosevelts, and after their living in the grand style of the White House, I was a little uneasy about entertaining her in our home for several hours.

Lew and Mrs. Roosevelt arrived at our door around 3 p.m. and were immediately greeted warmly by our children. Not much time passed before I found Mrs. Roosevelt and the children on the floor playing games, reading stories, and the children showing her all their prized possessions. As we departed about 6 p.m., we left two children in tears at losing their newfound friend.

Mrs. Roosevelt spoke to over 200 people and received a standing ovation. She was never known as a raving beauty but, having spent several hours with her, to me she was truly beautiful – engaging, highly educated, a wonderful conversationalist, and a loving individual. As we left her at her hotel after the program, I felt as the children had – sad at saying “goodbye” to a new friend.

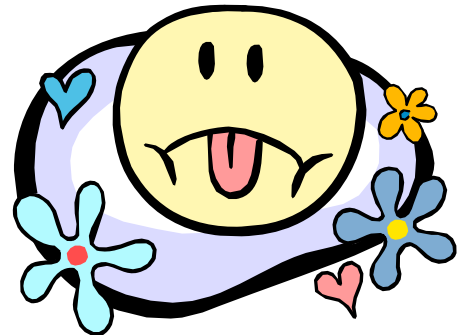
I learned a great lesson that day. Until you really get to know a person, you should never form a negative opinion.

IT PAYS TO COMPLAIN

by Ellen Stimler

On a recent shopping trip at the ShopRite in Medford, I found that my favorite brand of frozen vegetable burgers was out of stock. Noticing that ShopRite now had its own brand of veggie burgers, I took a chance on a box of four, because I usually had been very satisfied with the quality of the house brand items.

The next day, I fixed one of the new burgers for lunch, dressing it up with sautéed onion, roasted peppers, and a slice of cheese, all served on a whole-grain roll. To my surprise, the burger tasted awful. It had no flavor whatsoever, and the texture was quite disagreeable. It didn't compare in any respect to my usual brand yet cost the same, about \$4.00 for the box.



The package carried the ShopRite guarantee of “full satisfaction or your money back.” I decided to test this promise and wrote a letter to the address on the box, explaining why I found their product quite unsatisfactory.

About three weeks later, I received a letter from a ShopRite “customer care specialist,” enclosing coupons for \$4.00 and stating: “Your comments are very important because they tell us where we’ve fallen short and alert us to potential problems. Please be assured your complaint has been reported to our Quality Assurance Division.”

GERMINATING SEEDS FAST

by Ellen Stimler

In our recent readers' survey, several residents suggested that we have a gardening column. The Master Gardeners said they might be able to do this, if we tell them what topics we are interested in. So if you have a gardening problem of general interest, please let us know by leaving a note on the *Medford Leas Life* shelf. Meanwhile, here is a gardening item that may be of interest to those of you growing your own annuals.

I've always enjoyed growing my annuals from seeds, because of the ability to choose from a vast array of varieties. But germination of the seeds was always a risky and tedious problem. The garden catalogs urge the purchase of expensive heating and lighting equipment, and I observed that **Debbie Lux** from Landscaping had such a set-up for her seeds in the Nature Center. So I assumed that bottom heat was really important to get the seeds going. One day, when I was cleaning up a bathroom closet, I came across an electric heating pad, which I hadn't used for years. A light went on in my brain, and I decided that this pad might be just the thing to give bottom heat to my seed containers.

It worked so well last year that I purchased two more heating pads in the Thrift Shop, and I had the greatest success this year. My zinnia seeds germinated in two days instead of the 7-10 days indicated on the seed package, and seeds said to take 14 – 20 days emerged after a week. I sowed the seeds in 6-pack containers and covered each container with a large, clear plastic bag, forming a sort of individual greenhouse for each container. This year I added a slight refinement by placing several large wooden sandwich picks into each container to hold up the plastic and form a kind of tent.

The next question is: Did I go to all this trouble to raise food for the rabbits, or will my eventual transplants survive to provide a riot of color in my garden? Stay tuned.

DINNER OF KINDNESS

by Gertrude Marshall

For several weeks before Easter, a dinner table was set up in the Activities Room, with seven life-size figures representing Jesus as host at the head of the table, surrounded by Oprah Winfrey, Dr. Martin Luther King, Harriet Tubman, Mother Teresa, Chiune Sugihara, a Japanese consul in Lithuania who issued hundreds of visas to allow Jews to escape the Holocaust, and Dr. Ben Carson, a neurologist.

The exhibit was developed by students from the Forward School in Camden, in collaboration with Carol Hendrickson and Marco Giammetti, two artists from the Perkins Center for the Arts in Moorestown working under a grant from the New Jersey Council for the Arts. The children researched the lives of those they chose and picked people who represented kindness to them by their actions. They also researched the food these guests would have eaten as related to their culture and times. The third to sixth graders made the figures and some of the food out of papier-mâché and plaster under the direction of the artists, and the first and second graders made the smaller food items and the carpet under the table. The Japanese consul had sushi on his plate; Mother Teresa had a bowl of rice; and Dr. King and Harriet Tubman had collard greens and black-eyed peas. Jesus had figs and olives.

The students' voices are recorded on a tape, performing an original student script as to what dinner conversation might have been among these guests. The tape could be played by visitors, or they could read the transcript of the conversation. Jesus is heard starting the conversation by observing that they are all there because they have helped others. Several broke the laws of their time to do this. They discuss slavery and conclude that African-Americans still have not overcome its effects. They also question Jesus as to why good people are often made to suffer.

The exhibit came to Medford Leas through arrangements made by Mrs. Keith (Cindy)

Quinton, who is the school's Director of Development, working with **Gerry Stride**, Director of Community Life. Gerry said that, because of the great interest created by the exhibit, she has arranged for Catherine Sielaki, principal of the school, to come to Medford Leas on Monday, May 3, when she will meet with residents at 2 p.m. in the Activities Room to talk about the school and its programs.



Lionel Southern Pacific RR Steam Engine and Tender

EMPLOYEES OF THE MONTH

by Maggie Woodard

Tammy Gerhart, Assistant to the Nurse Manager on the John Estaugh Unit, was named January's Employee of the Month. Once a receptionist at the Front Desk, she is much appreciated by her present co-workers who say that she is kind, caring, courteous, patient, dependable, efficient, and organized! One staff member values her because "she is always calm and maintains harmony for us."

The Employee of the Month for February, **Bonnie Dewitt**, started at Medford Leas in 1992 as a member of the Dining Services staff in the Patient Services Department, but found her true calling as a companion in July 1998. Her sweet, caring nature and the patience that she shows with residents and staff has made her a great part of the Resident Services Department.

The Employee of the Month for March, **Davina Cornish**, has been at Medford Leas since November 1999. She started as a Certified Nursing Assistant (CNA) on John Woolman, but as her creativity and sincere regard for residents was recognized, she was asked to use her skills on the Estaugh Unit in Therapeutic Recreation.

Davina has a knack for knowing what the residents might enjoy, even when they can't articulate it, because she takes the time to observe them thoughtfully.

Congratulations, Tammy, Bonnie, and Davina, and many thanks for your good work at Medford Leas.

* * * * *

ART GALLERY NEWS

by Helen L. Vukasin

The month of May will feature the exciting paintings of Ben Cohen. Mr. Cohen has studied at the Pratt Institute in New York City and the Fleisher Art Memorial in Philadelphia. For many years he was a Toy and Jacquard Sweater designer as well as a free lance designer.

He is a member of many professional societies and is affiliated with several galleries in Philadelphia. His paintings are in private and corporate collections.

The opening reception will be held on May 4 in the Art Gallery from 3 pm to 4:30 pm. Mr. Cohen will talk about his work at 3:30 pm.

At Lumberton Leas, the group exhibition, TAPS (Tuesday Artists and Painters), opened with a very lively reception. Besides the artists themselves, a number of Lumberton and Medford residents stopped by to help celebrate. The show will be up for the months of April, May, and June in case you missed the opening.

Thanks to Medford Leas, the Gallery is sporting a fresh coat of paint and carpeting that, with a little luck, is now free of mold.

Members of the group, under the direction of Rita Keiper, who are showing some of their work are: **Colette Bartholomew, Stan Brush, Helen Flynn, Barbara and Chuck Lassen, Eileen McConville, Mary Lou Morrow, Gini Mutschler, Jean Nicholson, Ben Paradee, and Helen Vukasin.**

BOOKS WE ENJOYED READING

Ed. Note: In this space we share comments on books we found worth reading and we encourage readers to send us brief reviews of the books they liked.

On Retiring to Kendal (and Beyond): A Literary Excursion

By Peter Bien

Pendle Hill Pamphlet 368 (28 pages)

The obvious reasons for coming to a retirement residence are often expressed as desires to lessen cares both physical and medical, unburdening our children, and securing financial obligations. Bien exposes another reason, which he states as primary, and which may not be consciously voiced. In this pamphlet, the writer emphasizes concerns of loneliness and dying as prime issues which have brought about the choice of community living.

As a remedy to loneliness, Bien recognizes the desire for a corporate nature of life in general which minimizes the isolation often developing for older people. Then he also addresses the question of whether death is an unmitigated calamity. He uses the deliberations of poets and philosophers for cultivating rather than rejecting one's journey involving retirement (and beyond).

This work may be considered a meditation, using the great literary passages of Homer, Shakespeare, Milton, Kazantzakis, Cavafy, and others, which create a different stance to the last approach of life. It is also interesting to listen to the voice of the author, who has chosen to live in a retirement community similar to our own.

Peter Bien specialized in modern Greek poetry and prose, particularly the translations of the works of Nikos Kazantzakis. He taught at Dartmouth College. With others from Hanover Monthly Meeting, he helped "invent" Kendal at Hanover, where he now resides.

A copy of this pamphlet is in the Medford Leas Library pamphlet area.

by Ruth Blattenberger



The Murder Room

By P.D. James

Knopf (415 pages)

She is simply a wonderful writer. At age 84, P.D. James continues to be Britain's most successful living writer of crime fiction. She is also a gifted novelist with a flair for detail and a penetrating eye into the motives of all her characters.

For Commander Adam Dalgliesh and his expert team this is a case fraught with danger and complexity. Inside the small private Dupayne Museum, on the edge of Hampstead Heath in London, a bitter struggle is going on. The family members are divided on keeping the museum open. As a vote approaches on a new lease, one of the family members is found brutally murdered. As Dalgliesh starts his investigation of this killing, a second corpse is discovered .

Each of these murders seem to be a copycat of the past crimes that are on display in the famous Murder Room of the museum. The private lives of each of the suspects and their own psychological intricacies expose many a dark passion that is at the heart of this mystery.

Dalgliesh himself faces a deep turmoil in his own personal life that needs to be resolved.

This is a book rich in plot, character study and intrigue. It is a worthy addition to the Dalgliesh series by this gifted writer.

This book is in the Medford Leas Library.

by George Rubin

NEW BOOKS IN LIBRARY

by Becky Monego

Biography

Alexander, W. *Sister Elizabeth Kenny*
 Burrell, P. *A Royal Duty (Diana)*
 Vickers, H. *Alice*

Non-Fiction

Akbar, M. *The Shade of Swords*
 Dyer, D. *The Generations of Corning*
 Unwin, S. *The Probability of God*

Fiction

Albom, M. *The Five People You
 Meet in Heaven*
 Clancy, T. *The Teeth of the Tiger*
 Deveraux, J. *Holly*
 Elliot, L. *Under a War-Torn Sky*
 Hazzard, S. *The Great Fire*
 Kelley, D. *The Captain's Wife*
 Nader, N. *The Hunted Moon*
 Steel, D. *Dating Game*

Mystery

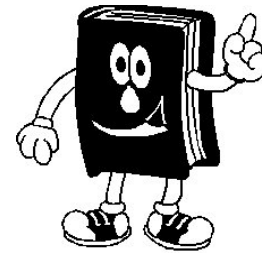
Barnard, R. *The Mistress of Alderley*
 Barnes, L. *The Big Dig*
 Crombie, D. *And Justice There Is None*
 Fiffer, S. *The Wrong Stuff*
 Flynn, V. *Executive Power*
 Gerritson, T. *The Surgeon*
 Jance, J. *Exit Wounds*
 Mitchell, K. *Sky Woman Falling*
 O'Shaughnessy, P. *Presumption of Death*
 Paretsky, S. *Blacklist*
 Walsh, J. *A Presumption of Death*

BRIDGE PLAYERS NEEDED

The Progressive Bridge group needs substitute players. They meet Fridays in the Activities Room at 7:15 p.m. for an enjoyable evening. For more information or to volunteer, please call Frances Carter at 3664.

NEW DONATED TALKING BOOKS

By Myra Binstock



Non -Fiction

Albright, M. *Madam Secretary*
 McCullough, D. *Mornings on Horseback*
 Suskind, R. *The Price of Loyalty*

Fiction

Albom, M. *The Five People You
 Meet in Heaven*

Mystery

Braun, L. *The Cat Who Talked Turkey*
 Grisham, J. *The Last Juror*
 McBain, E. *Widows*
 Meltzer, R. *The Zero Game*
 Parker, R. *Bad Business*
 Patterson, J. *3rd Degree*
 Smith, A.M. *Ladies' Detective Agency*

RESIDENTS IN THE NEWS

Dan Seeger is taking a "vacation" from retirement at Lumberton Leas to take a position as Interim Director of the Pacific Mountain Regional Office of the American Friends Service Committee in San Francisco. He expects to be there for six to 18 months. For those who would like to contact him, his address is 1001 Pine Street, Apt. 407, San Francisco CA, 94109 (415-440-3811); dseeger800@aol.com. Before coming to Medford Leas, Dan was Executive Director of Pendle Hill in Pennsylvania. At Lumberton Leas he organized a local election campaign to replace township committee members favorable to airport expansion. After the election of two new committee members, Dan served as chair of the Lumberton Planning Board. The airport expansion has since been canceled by state agencies.

HANDS ACROSS 541 - PART TWO

by Maggie Heineman

When I was uploading MLRA committee job descriptions onto the MLRA website, I finally "got it." It should have been obvious all along. The reason there are so many groups and committees here is also the reason that Medford Leas is such a great place to live. **Russ Haley** moves to Medford Leas, and before long there's a new group for Family History. **Rita Keiper** moves to Lumberton Leas, and before long there's a new group called TAPS (Tuesday Artists and Painters). The MLRA bylaws call it "creating and cultivating a healthful, enjoyable, active, constructive, and useful community life."

And it's not necessary to live on the main campus to be a part of it. Part One of this series was about Lumberton Leas residents as volunteers; this month's report is on LL residents' involvement in MLRA committees and groups.

Milt Zimmerman and **Don Kocher** currently serve on the MLRA Board. **John Sommi** and **Ed Ferraro** are on the CDC. Ed, who was recently named to the Estaugh Board, chairs the MLRA Financial Review Committee.

Other MLRA committees and groups chaired by LL residents are: Bird Club, **Miriam Swartz**; Budget and Finance, **Charlie Morrow**; Great Decisions, **Stan Brush**; Leas Forum, **Helen Vukasin**; Mental Health, **Karin Sannwald**; Nature Bulletin Board, **Stan Brush**; Tennis, **Joan Kocher** and **Jack Akerboom**; Water Volley Ball, **Charlie Morrow**; Website, **Maggie Heineman**.

In addition, the following committees and groups have members who are Lumberton Leas residents: Art Studio, Communications, Creative Writing, Fitness and Recreation, Food, Gallery, Gift Shop, Health, Health Issues, Interior Design, Leas Lit, Medford Leas Life, MPAC, Nominating, Play Reading, Quilting, Scholarship, Sewing, Square Dancing, Teas.

THE PASSOVER SEDER

by Kitty Katzell

On Monday evening, April 5, the first night of Passover, 44 people gathered in the Coffee Shop for the annual Seder. **Charles Brownfield** was the Leader, assisted by **Ernest Kaufman**, **Len Kahn**, **Bernie Rosen**, **Sylvia Friedman**, and **Inge Raven**, Participants. The Haggadah was one devised by Brownfield, and copies had been provided for everyone at the table so all could join in the readings. As part of the service, **Roz Kahn** lighted the candles and recited the traditional blessing associated with that rite. During the service, Inge Raven played her guitar and sang two traditional Passover songs, accompanied by many diners who were familiar with the lyrics and tunes. At one point in the service, **Colette & Bart Bartholomew** took turns reading portions from their own Haggadah, which were particularly timely for current world conditions.

As usual, Dining Services had created a picturesque setting for the occasion, with dark blue, light blue, or gold napkins at each place. There were also three of the traditional Seder plates on the table, each containing the six symbolic foods, which were explained as part of the service.

The meal started with gefilte fish, followed by matzoh ball soup. The main course was brisket of beef, prepared by **Ellen Wiener**; matzoh kugel, prepared by **Mina Kaufman**; and peas & carrots. Dessert was fresh fruit compote with sliced pound cake.

An interesting sidelight of the evening: Colette Bartholomew and Mina Kaufman were seated next to each other. In the course of getting acquainted during dinner, they discovered they had attended the same elementary school as children in Germany, and both had had the same teacher in second, third, and fourth grades, but they had been four years apart. Did you say something about a small world?

WELCOME TO REEVESVILLE

by Dene Mayer

Wow! That's the only word I could come up with after spending over an hour with **Warren** and **Lucile Reeves** at their home in Lumberton Leas. That's because their basement houses the most incredible electric train collection imaginable.

First, a little history. Warren started his collection in 1989 when he was living in Haddonfield and was District Sales Manager of Brockway Glass Co., a manufacturer of pharmaceutical containers. A customer, who was a miniature train buff, took him to a show in York, PA, helped him pick out a few trains, and got him started.

The "O" gauge tracks are mounted on several wooden platforms that take up the space of almost the entire huge basement. There are seven transformers just to keep the accessories going. What accessories? Try to imagine the following, all in miniature:



Lionel Crossing Gate

- An actual high-speed line that stops at a station, and the awaiting passengers are picked up.
- A police car with flashing lights pulling over a driver.
- A complete amusement park with Ferris wheel, merry-go-round with music, popcorn and cotton candy vendors, and a shooting gallery with moving ducks quacking.
- A barber shop with the barber and scissors moving to cut hair.

- A road construction crew with a jackhammer that gives off sparks.
- A bound-up lady on the tracks, with a Canadian Mountie to the rescue.
- Cows in a field and you hear them mooing.
- A small airport with planes and a rotating radar.
- And the latest acquisition: a lighted diner restaurant with smoke coming out of the chimney.



Lionel Diner with Smoking Chimney
photos of Lionel products from grahamstrains.com

And happily running through all this are the trains themselves, stopping at stations, going under bridges that go up, with an announcer calling out the stops on the Pennsylvania Railroad to New York.

Warren says he had trains as a kid until he discovered there were girls. He and Lucile, both widowed, married 12 years ago and have 13 grandchildren. Warren says Lucile has been helpful and supportive, but there's a sign near the tracks that says "My wife told me if I buy one more train she was going to leave me. God, I'll miss her."

Warren and Lucile were truly gracious and hospitable to me and have offered to show their trains to any interested residents of Medford and Lumberton Leas. They have suggested that grandchildren in particular would enjoy seeing this spectacular layout. On December 26, Warren does an annual magic show at Lumberton Leas; after the show may be a convenient time for your family to see the trains. By all means go, with or without kids, at Christmas or before, because the description above in no way does justice to this collection. Call ahead, of course.

CRYPTOGRAM

by Russell Hill

Here is the solution to the April Cryptogram:

HISTORY HAS MANY CUNNING MESSAGES,
CONTRIVED CORRIDORS AND ISSUES,
DECEIVES WITH WHISPERING AMBITIONS.

TSE (Eliot)

The correct solvers were: **Joan Bellman, Ruth Blattenberger, Mort Bregman, Florence Brudon, Scott Charles, Louise Evaul, Mickey Gray, Warren and Euseba Kamensky, Barbara Heizman, Mary Hope Mason, Andy Moll, Helen Peterson, Betty Preston, Doris Salati, Florence Sawyer, Bonnie Schilling, John Winton, Marie Winton.**

Here is the May Cryptogram:

ZAR ZARY YAN

ZMERGEEUNN RMNRURY

SUMRY'N PARRULEUNN;

YUCC'N UBUQTRAGEUL YMRY

EG UMLN WGL RG YUML.

EMNYU

Put answers in Box 45 by May 10.

MEDFORD LEAS LIFE

Ex Officio: Kitty Katzell, MLRA President; Barbara Britten, MLRA Sponsor

Editorial Staff: Ellen Stimler, Senior Editor; Kitty Katzell, Consultant; Kay Cooley, Dene Mayer, Margaret Melstrom, Gertrude Marshall, George Rubin, Maggie Woodard.

Proofreaders: The editorial staff, Herb Heineman, Arabelle Pennypacker, Florence Sawyer.

Secretary: Doris Curley

Business Manager: Gene Raup

Production: Maggie Heineman, Manager; Doris Curley, Assistant

Distributors: Berenice Finkelstone, "Pete" Johnson, Mary Lou Mullen, Mary Toda, Ginette Weld

Recorder: Florence Sawyer

Medford Leas Life is published monthly, September through June, by the Medford Leas Residents Association. Copies are distributed to all residents and to those on the waiting list. Subscriptions are available to others at \$7.50 per 10-issue volume by writing to Medford Leas Life 144 Medford Leas, Medford, NJ 08055. Medford Leas can be reached by phone at (609) 654-3000; by FAX at (609) 654-7894; on the World Web at www.medfordleas.org. The email address is information@medleas.org. When using FAX or email, specify the name of the person to receive the message.

**Deadline for submissions:
10th of the month preceding publication**

